

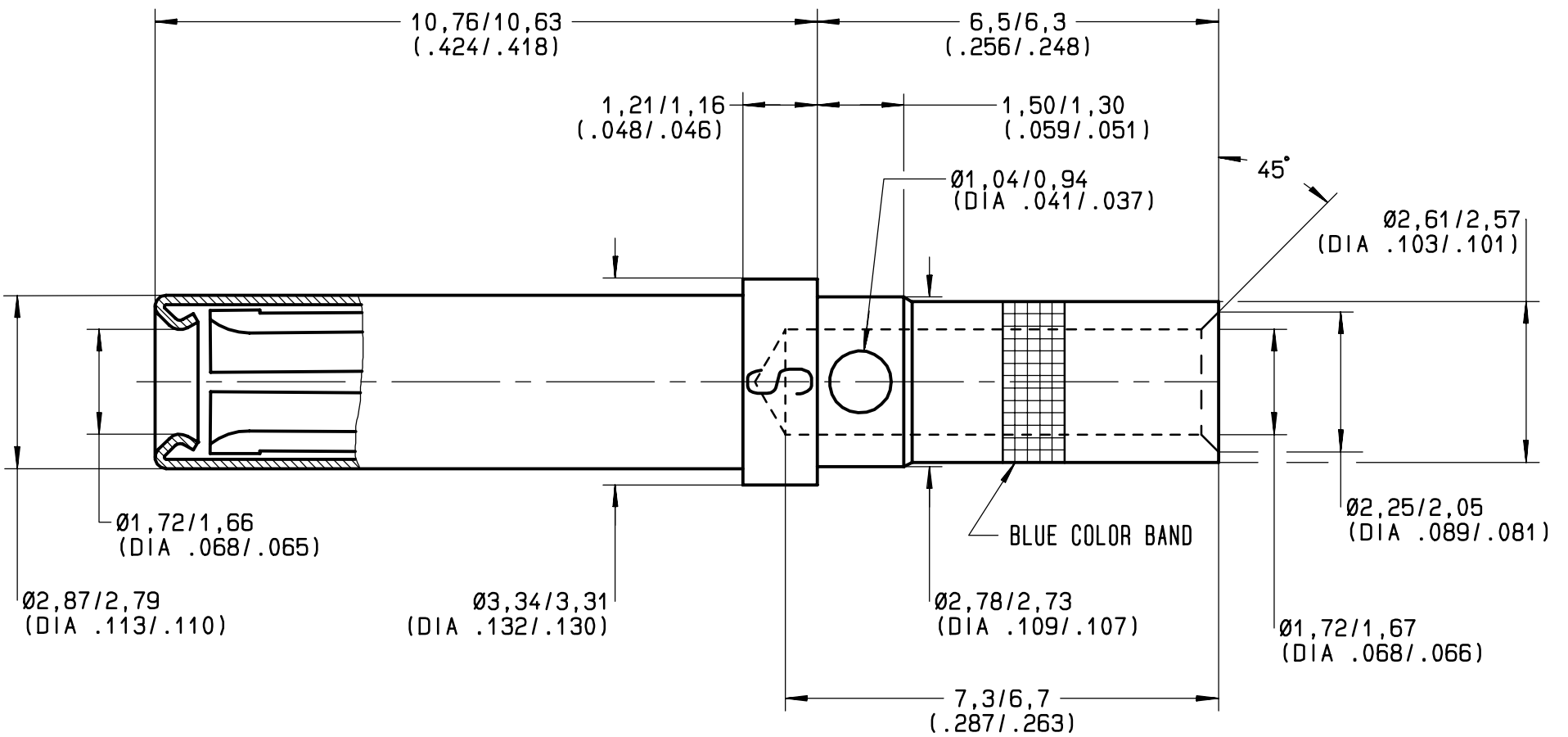


Series
EPX

SIZE 16 CRIMP SOCKET CONTACT

Issue:
05 OCT 98

Page
1 / 1



MATERIAL:

BODY: BERYLLIUM COPPER ALLOY 1/2 HARD HARDNESS IN KNOOP 140 MAX (126 HV) FOR CRIMP BARREL

SLEEVE: STAINLESS STEEL PER AISI 305

FINISH:

BODY: GOLD PER MIL-G-45204 TYPE I OR II GRADE C OR D CLASS 1 50 MICROINCHES OVER NICKEL PLATE PER QQ-N-290

SLEEVE: PASSIVED

WIRES ACCOMODATED: AWG 16-18-20

INSULATOR DIAMETER: .103 MAX (2,60)

STRIP LENGTH: .236 (6)

CRIMP CONTACT TENSILE REQUIREMENTS USING MIL SPEC TOOLING AND WIRE SPEC

MIL-W-81381/12 16 GA. 37 LBS (16,5 daN)

MIL-W-22759/41 16 GA. 50 LBS (22,5 daN)

M22520/1-01 16 GA. 49 LBS (22 daN)

CRIMPED CONTACTS WILL SHOW NO CRACK WHEN INSPECTED PER MIL-C-22520 AT 10X

RADIALL TOOLING RECOMMENDATION

CRIMPING TOOL: M22520/1-01 (RADIALL 282 291)

SELECTOR POSITION: 6 FOR AWG 16

5 FOR AWG 18

4 FOR AWG 20

POSITIONER: M22520/1-02 (RADIALL 282 972)

INSERTION/EXTRACTION TOOL: M81969/1-03 (RADIALL 282 546)

SPL RADIALL INS. 282 929 / EXT. 282 892

This information is given as an indication. In the continual goal to improve our products, we reserve the right to make any modifications judged necessary.

Issue	Revisions	Name	Approved
05 OCT 98	SYNTAX ERROR: CRACK WAS CREAK; UPDATED FINISH CHANGE S LOCATION; 1,04/0,94 WAS 1,05/0,95 10,76(.424) WAS 10,75(.423); 10,63(.418) WAS 10,51(.414); 02,87(.113) WAS 2,82(.111)	L. GARCIA	
06 JUL 98	UPDATED FROM THE DETAIL DRAWINGS	ARNAULT	O. VERNEAU
20 APR 98	MODIFIED FURTHER TO TYPING ERROR DIA .109/.107 WAS DIA .109/.106	VALGRESY	L GIET
16 APR 98	ADDED DIA .068/.065	VALGRESY	L GIET
31 MAR 98	REDRAWN. DIA .109/.107 WAS DIA .102/.100	VALGRESY	L GIET